

Management Team

Experience and structure supporting a growing company whilst retaining its family founded DNA

Board of Directors



CEO
Pat Mc Loughlin

- Seasoned Chief Executive Officer across public, voluntary and private sector
- Former roles include CEO of Eastern and South Eastern Health Boards (prior to formation of national Health Service Executive (HSE), Deputy CEO of HSE and more recently CEO of Alzheimer's Society of Ireland
- Has consulted for and chaired numerous committees for the government of Ireland. Currently chairperson of the audit committee of the houses of the Oireachtas (Irish Parliament)



Development Director
Roger Kiely

- Trained and developed in BDO Corporate Finance working alongside Virtue through much of its accelerated development trajectory
- Has managed the M&A activity of Virtue directly over the last two years including Real Estate Management
- MBA and ACCA



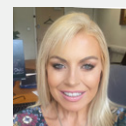
COO Residential
Edward Stephenson

- Senior Management roles including General Management and CEO roles throughout the Irish hotel sector including multi site organisations and bringing some through to successful sale processes
- CEO Druids Glen Resort
- The Doyle Collection and General Manager of The Westbury and Croke Park Hotels, Various senior roles throughout the Jurys Inn Hotel Group
- MBA



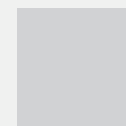
CFO
Garrett Donnelly

- Extensive Irish Health System experience in senior roles
- Over 30 years of International Finance and Senior Management experience working across multiple sectors - Nursing homes, Financial services, Technology, Retail and Marketing
- Background in International Mining and Technology Industries in both Public and Private companies managing finance functions in EMEA, India, APAC, CALA and SSC in US
- Raising finance, IPO, MBO, liaising with investors, M&A experience
- FCA and MBA



COO Home Care
Samantha Rayner

- Extensive Irish Health System experience in senior roles
- Was National Lead for Residential Care Services for Older Persons and the National Lead for Integrated Services
- Various projects she previously spear headed on behalf of the HSE included the inception and scaling of the National Transitional Care Scheme and Intermediate Residential Care Services, Delayed Transfer of Care Acute Hospitals and Winter Planning, National Lead of Day Care Services for Older People/Meals on Wheel/Voluntary Community Services, HSE Head of Housing with Supports and other alternative models to residential care



COO Disability Services
TBC

Pending entry point

